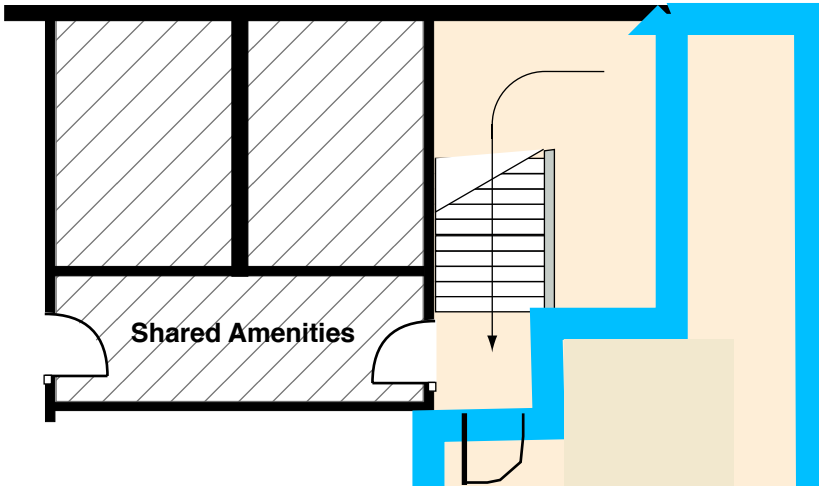
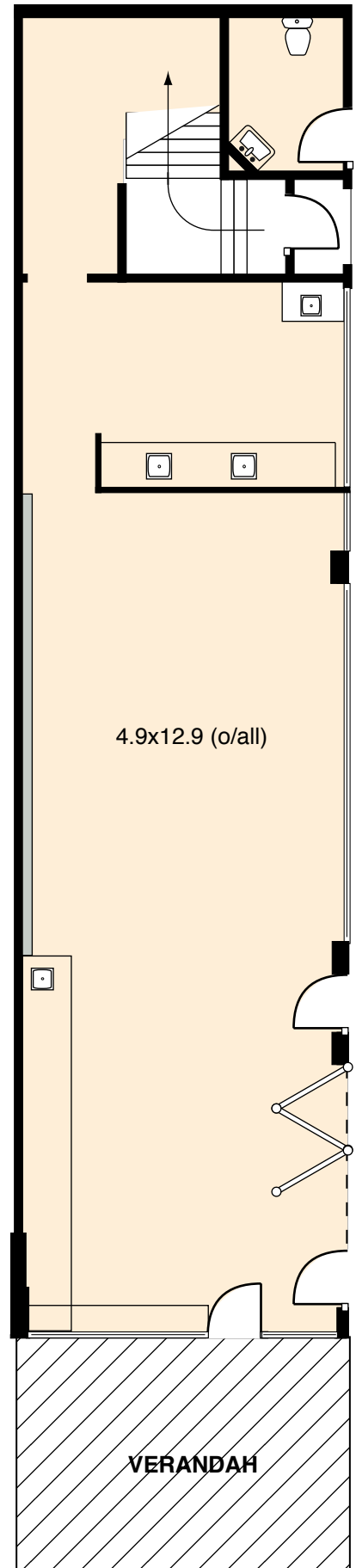


First Floor



Ground Floor



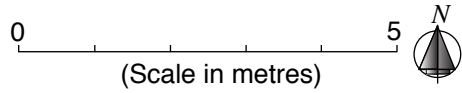
3 Moseley Square, Glenelg

ESTIMATED GROSS L.A. RETAIL

Ground Floor	96.6 sq. metres
First Floor	92.1 sq. metres
Balcony	18.6 sq. metres

Total GLAR 207.3 sq. metres

* Complies with the PCA Method of Measurement



5.0x20.2 (o/all)

4.9x12.9 (o/all)

BALCONY

VERANDAH

Moseley Square