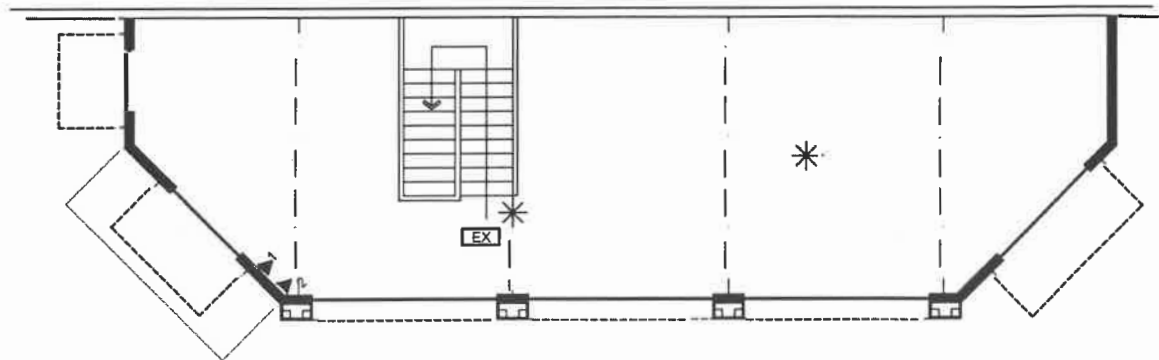
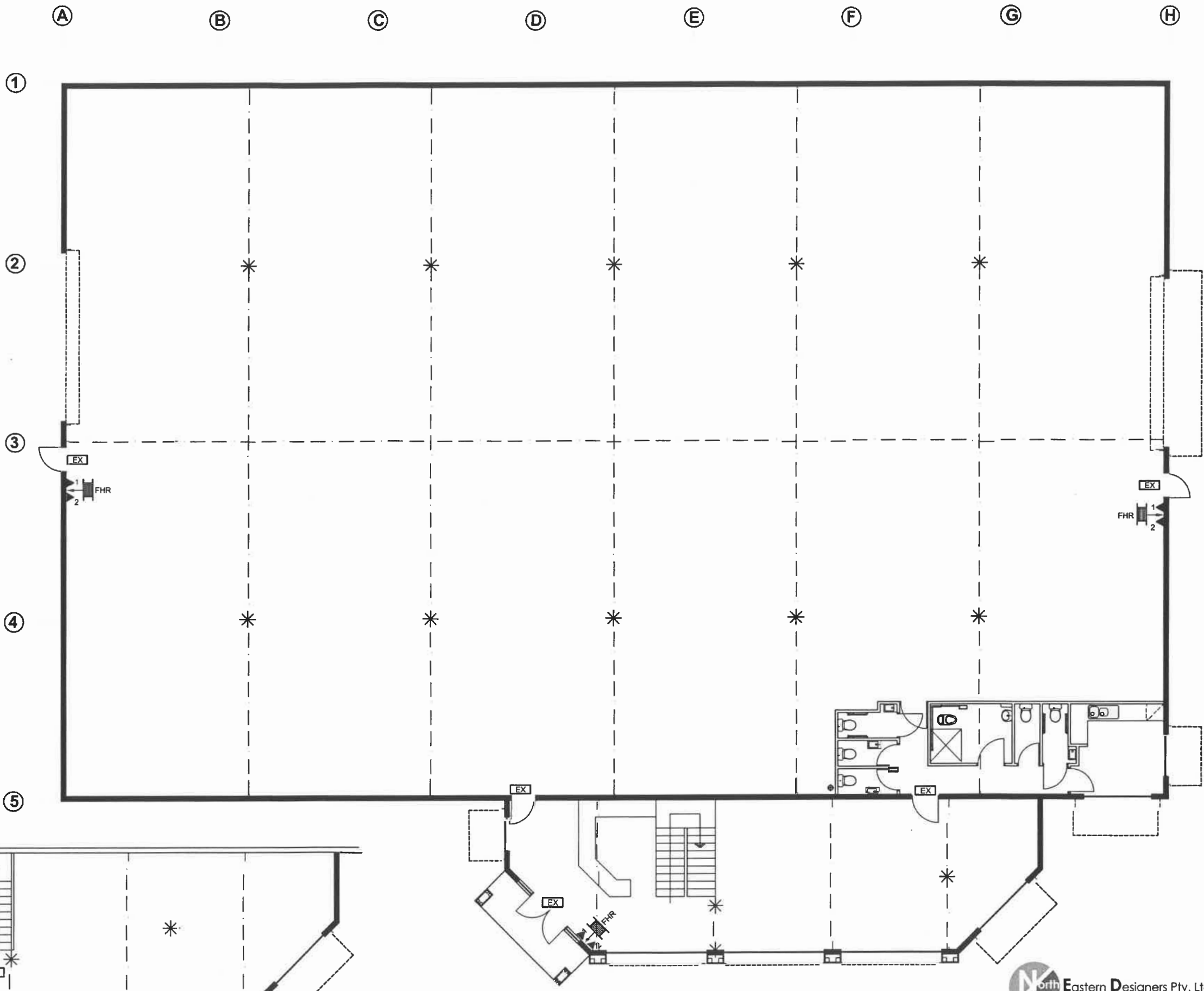
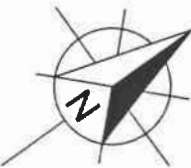


FIRE LEGEND	
FHR	36 M FIRE HOSE REEL as per AS 2441
	4.5KG DRY CHEMICAL FIRE EXTINGUISHER
	9 LITRE WATER FIRE EXTINGUISHER

ELECTRICAL LEGEND	
	EXIT SIGN - EXLED 32 M JUMBO
	SPITFIRE EMERGENCY LIGHT

EMERGENCY LIGHTING

- Installation**
 4.1 The emergency lighting installation shall comply with the latest edition of the BCA and of AS/NZ 2293: Emergency Evacuation Lighting for Buildings.
- 4.2 All emergency lighting fittings shall be of the self contained single point type with high temperature nickel cadmium batteries and dual rate charge.
- 4.3 For those fittings which are not sustained emergency luminaires, the minimum acceptable quality fitting shall be similar to White Lite Industries PFD10 Pathfinder.
- 4.4 All emergency lighting fittings shall be wired through an unswitched active conductor connected on the line side of the circuit breaker of the adjacent lighting circuit.
- 4.5 Provide at least one test switch for each emergency lighting circuit and install all test switches on the distribution board on the particular level concerned. Each test switch shall, as a minimum, comprise a 10 amp rated single pole throw switch similar to Arrow Hart 93 series. Each switch shall be mounted on the side of the distribution board so that the unswitched active conductor to the single point units is interrupted to simulate a power of circuit failure. Supply and install to each test switch an engraved red/white trafficite label "Emergency Lighting Test Switch" in 4mm high letters.
- 4.6 For each size and type of self-contained emergency lighting luminaire, supply to the owner copies of a certificate of tests stating the testing authority, manufacturer and details of the luminaire classification to AS/NZ 2293.1



FIRST FLOOR PLAN ELECTRICAL

SCALE
 0 1 2 3 4 5

GROUND FLOOR PLAN ELECTRICAL

SCALE 1-100 @A2
 0 1 2 3 4 5



REVISION 13-9-2019 25-10-2019 30-01-2020 02-03-2020	DATE Jan. 20	ISSUE Approvals	CLIENT J. McMurray	PROJECT Proposed Warehouse
PROJECT No. 300120 WD	SHEET 6	SITE ADDRESS Lt. 5 Cross Rd. Cavan	DRAWING TITLE ELECTRICAL PLAN	