

Leedwell

1 Ashwin Parade, Torrensville

ESTIMATED GROSS LETTABLE AREA

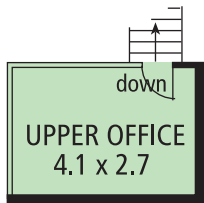
 WORKSHOP:	407 sq.metres
 OFFICE:	48 sq.metres
 UPSTAIRS OFFICE:	11 sq.metres
 AMENITIES:	8 sq.metres

TOTAL GROSS LA: 474 sq.metres

Complies with the
PCA Method of Measurement

Site Area: 696 sq.metres*

*approximate only - not surveyed



sb = switch board
dist = distribution board
a/c = air conditioner

